



HAMPTON HILL Mining NL

ABN 60 060 628 524

Second Floor, 9 Havelock Street
West Perth WA 6005

Postal Address:
PO Box 689, West Perth WA 6872

Telephone: (618) 9481 8444

Facsimile: (618) 9481 8445

Email: info@hamptonhill.com.au

Web: www.hamptonhill.com.au

Dear Shareholders,

30th March 2023

The next window for trading via the Primary Markets trading hub will commence on Monday, April 3rd and will be open until Friday, April 28th. Shareholders should refer to the Primary Markets website for full details of how to buy or sell.

The primary asset of the Company remains its 5% royalty on any gold production from the Apollo Hill central leases in excess of the first 1 million ounces. The project is owned by Saturn Metals Ltd (STN), a company largely dedicated to advancing Apollo Hill. While the current resource stands at 76 million tonnes containing 1.47 million ounces, there is opportunity for the Apollo Hill deposit to grow in size and to provide our Company with a substantial and long term royalty stream.

We attach an extract from the latest STN ASX release which provides a very positive confirmation of the rapid progress being made towards the commencement of a trial heap leach operation at Apollo Hill and the related development studies.

This year should be one of increasing excitement and shareholders can follow progress in more detail by referring to the STN website releases,

Joshua Pitt, Chairman

THICK AND HIGHER-GRADE INTERCEPTS AT SURFACE – APOLLO HILL GOLD DEPOSIT

Saturn Metals Limited (ASX:STN) ("**Saturn**", "**the Company**") is pleased to announce remaining results from its 5,800m 120 hole Reverse Circulation (RC) grade control drilling program at Saturn's planned bulk sample pit location.

HIGHLIGHTS

Impressive Results

- Broad and higher grade, intersections at and near surface include:
 - **37m @ 2.02g/t Au** from **1m** including **12m @ 4.55g/t Au** from **4m** – AHRC0906
 - **64m @ 1.06g/t Au** from **0m** including **18m @ 2.63g/t Au** from **9m** – AHAC0931
 - **15m @ 2.45g/t Au** from **0m** including **7m @ 4.99 g/t Au** from **0m** – AHAC0926
 - **36m @ 1.34g/t Au** from **10m** and **9m @ 1.50g/t Au** from **58m** – AHAC0908
 - **33m @ 1.21g/t Au** from **27m** – AHAC0953
 - **31m @ 1.14g/t Au** from **39m** – AHAC0932
 - **31m @ 1.10g/t Au** from **0m** – AHRC0907
 - **15m @ 1.37g/t Au** from **22m** – AHAC0934
- Drill results returned within the planned bulk sample pit area have:
 - Provided definition of some of the deposits higher grade architecture;
 - Highlighted the potential for a positive reconciliation between the current Mineral Resource Model and any new grade control model in this area of the deposit (potential for localised improvements in grade and tonnes);
 - Confirmed the target area as a suitable location for a low strip bulk sample pit;
 - Highlighted the potential for highly payable ores at surface across the deposit; and
 - Provided high confidence data for the implementation of the planned pilot heap leach and bulk sample pit operation.
- All assays have now been returned from the grade control program and results will ultimately be used in future upgrades to Apollo Hill's growing Mineral Resource (current published Mineral Resource of 76.6 Mt @ 0.6 g/t Au for 1,469,000 oz¹ – next upgrade due in mid-2023).
- A total of 134 significant results are listed in Appendix 1 from the 60 holes reported in this batch of assays.
- Results complement intersections reported in earlier Saturn ASX Announcements on 28 February 2023 (including 13m @ 2.53g/t Au from 53m – AHAC0849) and 16 March 2023 (including 55m @ 2.12g/t Au from 0m – AHRC0897).

¹ Details of the Mineral Resource which currently stands at 76.6 Mt @ 0.6 g/t Au for 1,469,000 oz Au and a breakdown by category are presented in Table 1a (page 4 of this document) along with the associated Competent Persons statement and details of the ASX announcement that this information was originally published in.

The simplified cross section in Figure 1 shows the reported drill intersections relative to the bulk sample pit design.

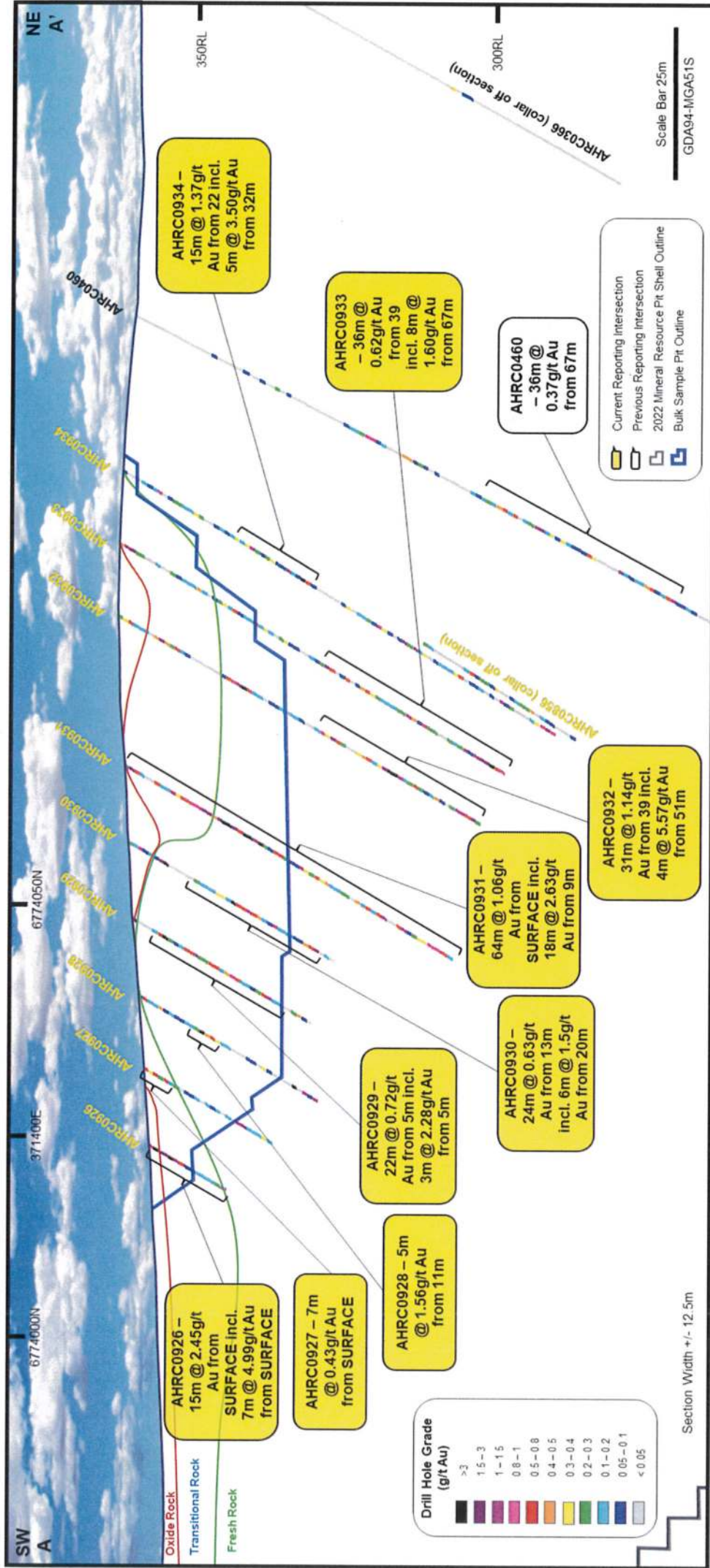


Figure 1 – Simplified geological cross section of recent results, relative to planned bulk sample pit shell and Apollo Hill Mineral Resource Shell.

SATURN METALS

Legend

- + Previously Reported Drill Holes
- Planned Bulk Sample Pit
- RC Grade Control**
 - Previously Reported GC Holes
 - Currently Reporting GC Holes

0 25 50 m
GDNR_515

Current Reporting Intersection

AHRC0906 – 37m @ 2.02g/t Au from 1m

AHRC0908 – 36m @ 1.34g/t Au from 10m

AHRC0907 – 31m @ 1.1g/t Au from 0m

AHRC0921 – 12m @ 0.85g/t Au from 6m

AHRC0934 – 15m @ 1.37g/t Au from 22m

AHRC0932 – 31m @ 1.14g/t Au from 39m

AHRC0931 – 64m @ 1.06g/t Au from 0m

AHRC0916 – 7m @ 1.53g/t Au from 30m

AHRC0956 – 11m @ 1.1g/t Au from 32m

AHRC0937 – 1m @ 13.80g/t Au from 4m

AHRC0955 – 9m @ 1.55g/t Au from 29m

AHRC0926 – 15m @ 2.45g/t Au from 0m

AHRC0901 – 6m @ 1.97g/t Au from 4m

AHRC0953 – 33m @ 1.21g/t Au from 27m

AHRC0936 – 31m @ 1.14g/t Au from 39m

AHRC0935 – 31m @ 1.14g/t Au from 39m

AHRC0933 – 31m @ 1.14g/t Au from 39m

AHRC0931 – 31m @ 1.14g/t Au from 39m

AHRC0929 – 31m @ 1.14g/t Au from 39m

AHRC0927 – 31m @ 1.14g/t Au from 39m

AHRC0925 – 31m @ 1.14g/t Au from 39m

AHRC0923 – 31m @ 1.14g/t Au from 39m

AHRC0921 – 31m @ 1.14g/t Au from 39m

AHRC0919 – 31m @ 1.14g/t Au from 39m

AHRC0917 – 31m @ 1.14g/t Au from 39m

AHRC0915 – 31m @ 1.14g/t Au from 39m

AHRC0913 – 31m @ 1.14g/t Au from 39m

AHRC0911 – 31m @ 1.14g/t Au from 39m

AHRC0909 – 31m @ 1.14g/t Au from 39m

AHRC0907 – 31m @ 1.14g/t Au from 39m

AHRC0905 – 31m @ 1.14g/t Au from 39m

AHRC0903 – 31m @ 1.14g/t Au from 39m

AHRC0901 – 31m @ 1.14g/t Au from 39m

AHRC0899 – 31m @ 1.14g/t Au from 39m

AHRC0897 – 31m @ 1.14g/t Au from 39m

AHRC0895 – 31m @ 1.14g/t Au from 39m

AHRC0893 – 31m @ 1.14g/t Au from 39m

AHRC0891 – 31m @ 1.14g/t Au from 39m

AHRC0889 – 31m @ 1.14g/t Au from 39m

AHRC0887 – 31m @ 1.14g/t Au from 39m

AHRC0885 – 31m @ 1.14g/t Au from 39m

AHRC0883 – 31m @ 1.14g/t Au from 39m

AHRC0881 – 31m @ 1.14g/t Au from 39m

AHRC0879 – 31m @ 1.14g/t Au from 39m

AHRC0877 – 31m @ 1.14g/t Au from 39m

AHRC0875 – 31m @ 1.14g/t Au from 39m

AHRC0873 – 31m @ 1.14g/t Au from 39m

AHRC0871 – 31m @ 1.14g/t Au from 39m

AHRC0869 – 31m @ 1.14g/t Au from 39m

AHRC0867 – 31m @ 1.14g/t Au from 39m

AHRC0865 – 31m @ 1.14g/t Au from 39m

AHRC0863 – 31m @ 1.14g/t Au from 39m

AHRC0861 – 31m @ 1.14g/t Au from 39m

AHRC0859 – 31m @ 1.14g/t Au from 39m

AHRC0857 – 31m @ 1.14g/t Au from 39m

AHRC0855 – 31m @ 1.14g/t Au from 39m

AHRC0853 – 31m @ 1.14g/t Au from 39m

AHRC0851 – 31m @ 1.14g/t Au from 39m

AHRC0849 – 31m @ 1.14g/t Au from 39m

AHRC0847 – 31m @ 1.14g/t Au from 39m

AHRC0845 – 31m @ 1.14g/t Au from 39m

AHRC0843 – 31m @ 1.14g/t Au from 39m

AHRC0841 – 31m @ 1.14g/t Au from 39m

AHRC0839 – 31m @ 1.14g/t Au from 39m

AHRC0837 – 31m @ 1.14g/t Au from 39m

AHRC0835 – 31m @ 1.14g/t Au from 39m

AHRC0833 – 31m @ 1.14g/t Au from 39m

AHRC0831 – 31m @ 1.14g/t Au from 39m

AHRC0829 – 31m @ 1.14g/t Au from 39m

AHRC0827 – 31m @ 1.14g/t Au from 39m

AHRC0825 – 31m @ 1.14g/t Au from 39m

AHRC0823 – 31m @ 1.14g/t Au from 39m

AHRC0821 – 31m @ 1.14g/t Au from 39m

AHRC0819 – 31m @ 1.14g/t Au from 39m

AHRC0817 – 31m @ 1.14g/t Au from 39m

AHRC0815 – 31m @ 1.14g/t Au from 39m

AHRC0813 – 31m @ 1.14g/t Au from 39m

AHRC0811 – 31m @ 1.14g/t Au from 39m

AHRC0809 – 31m @ 1.14g/t Au from 39m

AHRC0807 – 31m @ 1.14g/t Au from 39m

AHRC0805 – 31m @ 1.14g/t Au from 39m

AHRC0803 – 31m @ 1.14g/t Au from 39m

AHRC0801 – 31m @ 1.14g/t Au from 39m

AHRC0799 – 31m @ 1.14g/t Au from 39m

AHRC0797 – 31m @ 1.14g/t Au from 39m

AHRC0795 – 31m @ 1.14g/t Au from 39m

AHRC0793 – 31m @ 1.14g/t Au from 39m

AHRC0791 – 31m @ 1.14g/t Au from 39m

AHRC0789 – 31m @ 1.14g/t Au from 39m

AHRC0787 – 31m @ 1.14g/t Au from 39m

AHRC0785 – 31m @ 1.14g/t Au from 39m

AHRC0783 – 31m @ 1.14g/t Au from 39m

AHRC0781 – 31m @ 1.14g/t Au from 39m

AHRC0779 – 31m @ 1.14g/t Au from 39m

AHRC0777 – 31m @ 1.14g/t Au from 39m

AHRC0775 – 31m @ 1.14g/t Au from 39m

AHRC0773 – 31m @ 1.14g/t Au from 39m

AHRC0771 – 31m @ 1.14g/t Au from 39m

AHRC0769 – 31m @ 1.14g/t Au from 39m

AHRC0767 – 31m @ 1.14g/t Au from 39m

AHRC0765 – 31m @ 1.14g/t Au from 39m

AHRC0763 – 31m @ 1.14g/t Au from 39m

AHRC0761 – 31m @ 1.14g/t Au from 39m

AHRC0759 – 31m @ 1.14g/t Au from 39m

AHRC0757 – 31m @ 1.14g/t Au from 39m

AHRC0755 – 31m @ 1.14g/t Au from 39m

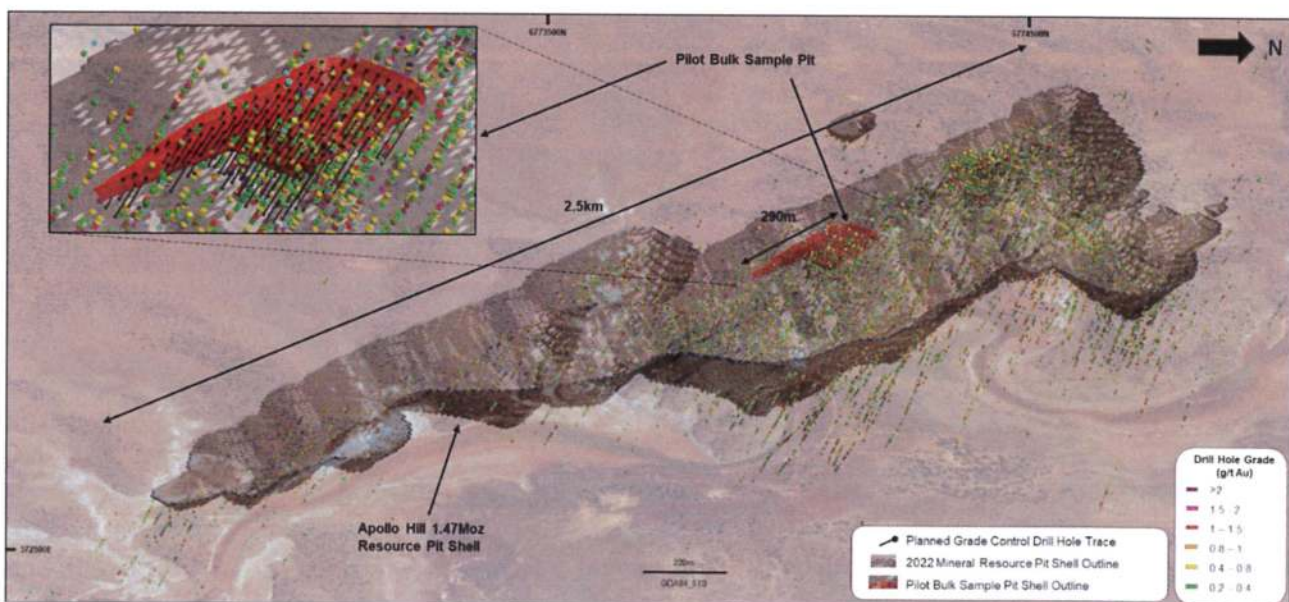
AHRC0753 – 31m @ 1.14g/t Au from 39m

AHRC0751 – 31m @ 1.14g/t Au from 39m

AHRC0749 – 31m @ 1.14g/t Au from 39m

AHRC0747 –

Figure 3 shows the grade control program and bulk sample pit location relative to Apollo Hill's full development project and Mineral Resource shell. The information from our pilot scale studies is providing leverage for our larger scale development activities.



SATURN METALS